

LICENSING ACT 2003 SUB-COMMITTEE

FRIDAY 7 JULY 2023

1.30 PM

Council Chamber - Town Hall

AGENDA

Page No

Additional Information

3-28



There is an induction hearing loop system available in all meeting rooms. Some of the systems are infra-red operated, if you wish to use this system then please contact Karen Dunleavy on 01733 452233 as soon as possible.

"Did you know? All Peterborough City Council's meeting agendas are available online or via the [modern.gov](#) app. Help us achieve our environmental protection aspirations and view this agenda online instead of printing it."

Emergency Evacuation Procedure – Outside Normal Office Hours

In the event of the fire alarm sounding all persons should vacate the building by way of the nearest escape route and proceed directly to the assembly point in front of the Cathedral. The duty Beadle will assume overall control during any evacuation, however in the unlikely event the Beadle is unavailable, this responsibility will be assumed by the Committee Chair. In the event of a continuous alarm sounding remain seated and await instruction from the duty Beadle.

Recording of Council Meetings

Any member of the public may film, audio-record, take photographs and use social media to report the proceedings of any meeting that is open to the public. Audio-recordings of meetings may be published on the Council's website. A protocol on this facility is available at:

<http://democracy.peterborough.gov.uk/documents/s21850/Protocol%20on%20the%20use%20of%20Recording.pdf>

For more information about this meeting, including access arrangements and facilities for people with disabilities, please contact Karen S Dunleavy in the City Council's Democratic Services team on Peterborough 01733 452233 or by email at democraticservices@peterborough.gov.uk

Committee Members:

Councillors: Warren, Thulbourn and Wiggin (Chairman)

Substitutes: Councillors: Hogg, Sainsbury and Iqbal

Further information about this meeting can be obtained from Karen Dunleavy on telephone 01733 452233 or by email – karen.dunleavy@peterborough.gov.uk

Photos taken from back garden Svenskaby





Committee is asked to consider the following noise impact assessment

11 Assessment of the impacts

COMMENTARY ON 11

The significance of sound of an industrial and/or commercial nature depends upon both the margin by which the rating level of the specific sound source exceeds the background sound level and the context in which the sound occurs. An effective assessment cannot be conducted without an understanding of the reason(s) for the assessment and the context in which the sound occurs/will occur. When making assessments and arriving at decisions, therefore, it is essential to place the sound in context.

Obtain an initial estimate of the impact of the specific sound by subtracting the measured background sound level (see Clause 8) from the rating level (see Clause 9).

NOTE 1 More than one assessment might be appropriate.

- a) Typically, the greater this difference, the greater the magnitude of the impact.
- b) A difference of around +10 dB or more is likely to be an indication of a significant adverse impact, depending on the context.
- c) A difference of around +5 dB is likely to be an indication of an adverse impact, depending on the context.
- d) The lower the rating level is relative to the measured background sound level, the less likely it is that the specific sound source will have an adverse impact or a significant adverse impact. Where

© THE BRITISH STANDARDS INSTITUTION 2019 - ALL RIGHTS RESERVED 15

21/76

BS 4142:2014+A1:2019

BRITISH STANDARD

the rating level does not exceed the background sound level, this is an indication of the specific sound source having a low impact, depending on the context.

NOTE 2 Adverse impacts may include but not be limited to annoyance and sleep disturbance. Not all adverse impacts will lead to complaints and not every complaint is proof of an adverse impact.

Where the initial estimate of the impact needs to be modified due to the context, take all pertinent factors into consideration, including the following.

- 1) The absolute level of sound. For a given difference between the rating level and the background sound level, the magnitude of the overall impact might be greater for an acoustic environment where the residual sound level is high than for an acoustic environment where the residual sound level is low.

Where background sound levels and rating levels are low, absolute levels might be as, or more, relevant than the margin by which the rating level exceeds the background. This is especially true at night.

Where residual sound levels are very high, the residual sound might itself result in adverse impacts or significant adverse impacts, and the margin by which the rating level exceeds the background might simply be an indication of the extent to which the specific sound source is likely to make those impacts worse.
- 2) The character and level of the residual sound compared to the character and level of the specific sound. Consider whether it would be beneficial to compare the frequency spectrum and temporal variation of the specific sound with that of the ambient or residual sound to assess the degree to which the specific sound source is likely to be distinguishable and will represent an incongruous sound by comparison to the acoustic environment that would occur in the absence of the specific sound. Any sound parameters, sampling periods and averaging time periods used to undertake character comparisons should reflect the way in which sound of an industrial and/or commercial nature is likely to be perceived and how people react to it.

NOTE 3 Consideration should be given to evidence on human response to sound and, in particular, industrial and/or commercial sound where it is available. A number of studies are listed in the "Effects on humans of industrial and commercial sound" portion of the "Further reading" list in the Bibliography.
- 3) The sensitivity of the receptor and whether dwellings or other premises used for residential purposes will already incorporate design measures that secure good internal and/or outdoor acoustic conditions, such as:
 - i) facade insulation treatment;
 - ii) ventilation and/or cooling that will reduce the need to have windows open so as to provide rapid or purge ventilation; and

This page is intentionally left blank



Nene Valley Rock Festival Frequently Asked Questions

What is Nene Valley Rock Festival and who are the people behind it?

Nene Valley Rock Festival (NVRF) is a 4 day festival of live music, at Ferry Meadows in Nene Park, Peterborough. It will feature 64 bands playing classic rock, blues rock and progressive rock on three stages housed within fully covered marquees. Nene Valley Rock Festival is run by a group of music fans with broad experience from their involvement in other festivals over many years.

When is Nene Valley Rock Festival (NVRF) taking place?

NVRF running from Thursday 31st August to Sunday 3rd September. On Thursday it will run from 5.30pm – 11.00pm. From Friday – Sunday, it will run from 11.00am – 11.00pm.

Where is NVRF taking place?

All festival activities, including music and campsite, will be contained within Horse Meadow (normally closed to the public), which will minimise the impact on regular users of the park.

Have the plans for NVRF changed at all since we applied for our licence?

The license application stated that Lynch Farm would be used as a campsite for those wishing to stay onsite during the festival. Following a review of the representations received during the statutory consultation period, it has been agreed by the festival organisers and Nene Park Trust to relocate the campsite to the end of Horse Meadow nearest the Nene Valley Railway line.

How many people will be attending NVRF?

There will be a maximum of 1,000 tickets available for each of the four days. Attendees will be a mixture of individual 1 day visitor tickets and 4 day passes. There will then be an additional number of people including the bands and volunteers / staff members responsible for the running of the festival, site maintenance, stewarding etc.

Day tickets are currently on sale alongside full four day tickets, on a reputable online ticketing platform. We are limited to 1000 adult attendees on any given day of the festival. Should the limit of 1000 tickets be reached on the platform, no further tickets will be sold and the festival marketing material will be immediately be updated to indicate that the festival is sold out. This figure does not include artists performing nor the staff or volunteers at the event.

Who will be attending NVRF?

The predominant age group of attendees at NVRF is likely to be aged 50-70 years old; however younger people are very welcome and there will be a smaller proportion who are under the age of 40.

How many additional members of staff, stewards and volunteers will be on site?

In addition to the paying festival attendees (capped at a maximum of 1000 adults on any given day of the festival), there will be approximately 100 volunteers who will be involved with the smooth running of the festival. The majority of these (between 50 – 60) will act as stewards (alongside a professional security team of 6 SIA-accredited personnel), around a further 30 will be involved with



the running of the single bar, located in the main marquee. The remainder will be responsible for the overall operation of the festival.

What kind of music will be played at NVRF?

The programme will be a mix of classic rock, progressive rock and blues rock.

If it's a Rock Festival, does that mean the music is going to be very loud?

For the genre of music we're showcasing at the festival, the volume of the music isn't as important to our attendees as the quality of the sound. It is not predominantly bass-heavy unlike drum and bass, disco or pop music. The volume does not need to be excessively loud – in fact we think it detracts from the music. We'll be operating at approximately 80-90 dB, which is equivalent to the noise made by a lawnmower or leaf blower, according to Decibel Pro.

How will we manage noise?

An independent competent acoustics specialist will be engaged to ensure that music from the event does not exceed the sound levels set by the Council. They will work alongside the providers of the PA equipment, who already have extensive experience of managing noise-related concerns at their festivals. Only one side of each marquee will be open, the one furthest from the housing. Placing the music stages inside partially enclosed marquees actively restricts the noise frequencies, meaning the impact of the noise bleed will be more like 65 dB, which is quieter than a domestic hairdryer. The layout of the stages within the arena has also been planned so that speakers will be at least 400m from the nearest housing and none of the speakers will be pointing in the direction of the nearby houses.

Peterborough City Council have set specific sound levels that the festival should not exceed. Without getting too technical, this is an average of 58dB over a 15 minute period at the location of the nearest residence. This will be monitored throughout the festival by both the professional sound engineers and an external consultant.

How will security be managed at the event?

A professional security company has been contracted to provide security services. All security personnel have full Security Industry Authority (SIA) qualifications. They will be based at the campsite, at the entrance to the music arena and within the music arena. A minimum of 6 SIA-licensed staff will be on site whilst the festival is on – 2 at the campsite, 2 at the main public entrance, 1 near the bar and 1 elsewhere within the music arena. Whilst we do not anticipate any significant issues at night, the SIA security presence will remain in the campsite with 2 of the team staying until 3am, and 1 staying throughout the rest of the night. There will also be SIA presence within the music arena overnight.

The professional security staff will be supported by event volunteer stewards, who will assist in the general running of the festival, as is usual practice with all established festivals. Stewards will be briefed in advance of the event and are to be provided with a Stewards Handbook which sets out their roles and responsibilities and the procedures for the safe running of the festival. The handbook also details the specific procedures to be followed in the event of an incident during the festival. It is expected that a total of approximately 50-60 stewards will be required, each working a four hour shift on each day of the festival. The final numbers of stewards is still to be confirmed as requests



from volunteers who wish to be considered as stewards are still being received. Additionally, there will be volunteers to support the running of the bar.

As part of the services provided by the security firm, event attendees and their bags will be checked. Searches by security staff are routinely required, providing an assurance to event attendees that adequate measures are in place to ensure their safety. SIA staff can refuse entry to anyone breaking any rules or any condition of the license. The festival's Ts & Cs list items that are banned and the SIA staff will enforce them. The fact that items are banned does not imply we expect anyone to bring them, but if anyone attempts to bring illegal items such as drugs or weapons to the site they will be refused entry and reported to the police. Signage at the entrance to the arena will clearly state that anybody trying to enter the arena with any prohibited items will be refused entry and reported to the police.

How will stewards and volunteers be briefed?

The stewards will arrive on Wednesday 30th August in advance of the festival commencing on the following day. A full stewards briefing will take place on the evening of 30th August and this will cover the operational aspects of the festival and will particularly focus on procedures to be followed by stewards in the event of any incident which may occur during the festival. Prior to arriving at the festival, Stewards will be issued with a Stewards Handbook and they will be expected to have familiarised themselves with the handbook.

The volunteers involved with the operation of the bar will be briefed by the Designated Premises Supervisor (DPS) before each of their shifts. The briefing will include a reminder of the provisions of the Challenge 25 initiative which will be operated throughout the festival to ensure that alcohol is not served to those aged under 18.

A separate briefing will be given to those volunteers involved with the site setup before the festival and the site breakdown after the festival. This is necessarily focussed on health and safety issues and will be given by the festival site managers. The volunteers involved in these operations will all have prior experience.

How are we assessing and managing risks associated with the event?

A comprehensive risk assessment has been under development for many months as part of our event planning process. The assessment will be submitted to Peterborough City Council's Safety Advisory Group (SAG). SAGs provide a useful forum for discussing and advising on public safety at an event. They aim to help organisers with the planning and management of an event, and to encourage cooperation and coordination between all relevant agencies. They are non-statutory bodies and so do not have legal powers or responsibilities, and are not empowered to approve or prohibit events from taking place. We view the SAG as a great opportunity for scrutiny into public safety at our event and we will be taking their recommendations very seriously. The membership of the SAG includes representatives from the Local Authority, emergency services, and other relevant bodies.

The site is near water – how is water safety being considered?

We are aware that the camp site will be near to the River Nene. During the festival there will be SIA security staff permanently on site equipped with radios and the water's edge will be monitored.



Should anyone fall into the river and have difficulties, the security staff will be on hand to quickly raise the alarm and deal with the situation.

Are we applying to sell alcohol at the event?

The event will have its own licenced bar. Our licence application includes appointing a Designated Premises Supervisor (DPS) who will be responsible for the operation of the bar, CCTV coverage, and the operation of Challenge 25 to ensure that no alcohol is served to minors. An SIA security team member will be based in and around the bar at all times and sales of alcohol will be refused to anybody considered to have already consumed too much. The police have advised us on the level of security they would expect for an event of this kind and our proposals have been discussed with them and are in line with their recommendations.

Can people access the site without a ticket?

Access to Horse Meadow will only be possible via the gate at the end of the light track running down from the park road opposite the railway bridge leading to Lynch Farm. At this gate, everybody will be asked to provide evidence of authorised attendance at the festival. This will be either in the form of previously issued tickets or in the form of wristbands that will be issued upon arrival. Individuals who have not previously bought tickets will be directed to the box office (provided the maximum number of tickets has not been exceeded – see elsewhere in these FAQs for procedures that will be followed in these circumstances).

Access to the music arena (containing the marquees, bar, food vendors, etc) area will be tightly controlled and SIA security personnel will be in place to prevent any unauthorised access to this area.

Horse Meadow is a relatively enclosed field bounded by existing hedges, the river and the railway embankment. Any gaps will be temporarily fenced off to make the field secure.

What safeguarding plans are in place?

Experience from previous similar festivals has shown that there are only a small number of U18s on site – in most cases these are children of band members as opposed to paying attendees. NVRF Ts&Cs require that anyone under the age of 16 is accompanied by an adult.

Challenge 25 Initiative procedures will be operated in the bar area – these are standard procedures that are now normally operated in all licensed premises. Peterborough City Council has already provided relevant materials to the festival organisers and as part of the briefing to bar staff, these procedures will be emphasised in order to comply with the conditions of the Premises License.

All festival attendees will be searched on entry to the arena area by SIA security staff to ensure that no prohibited items (as described above) will be permitted in the arena.

We will also have procedures in place in the event of any missing persons (including children) and these will be set out in the Stewards Handbook.



If I live nearby, should I be worried?

We have considered impact on local residents at every stage of our planning, and we are confident we will have minimal impact on our neighbours during the festival. The music will be playing 400m from the nearest houses, and there is a natural barrier between the arena and most homes with the trees and Nene Valley Railway. None of the speakers will be pointing in the direction of the houses, and we're using marquees to act as an additional sound barrier. The nature of the music also means that there won't be a continuous and heavy bass line.

Will I be disturbed late at night?

Our experience from previous festivals suggests that our expected attendees who are predominantly aged 50 years upwards quickly retire to bed once the music finishes at 11.00pm. As a result, we anticipated there will be very little late night noise. Furthermore, attendees tend to understand and respect the local community. The campsite rules prohibit the playing of music that can be heard beyond the immediate vicinity.

No barbecues will be permitted anywhere in Horse Meadow. This information is published on the festival website and all campsite users will be reminded of this upon arrival. The campsite will be patrolled by SIA security staff overnight to ensure any anti-social behaviour is quickly managed.

Will the festival-goers leaving the site impact the local traffic?

At the end of each evening when the music finishes at 11pm, day attendees and those attending for more than one day but staying elsewhere (e.g. at local hotels) will depart the festival. All traffic will leave the Park via Ham Lane where, at that time, there will be very little other traffic, then flow freely to Oundle Way and beyond.

Will event attendees be coming off site at all?

Experience from similar festivals has shown that the vast majority of attendees at the festival who camp will stay on site for the whole of the festival after they arrive. They either bring their own provisions or make use of the catering facilities provided at the festival. A small number of people camping in tents may leave the site (vehicle movements will be controlled by stewards) but we will encourage them to use the shops already within the site and as such support the local community.

How is the camping going to impact the local area?

We are offering camping tickets and will operate a small campsite within Horse Meadow that will cater for a maximum of 250 pitches that will be a combination of tents, caravans and motorhomes. The site will be equipped with ample facilities for the campers during their stay. We have not been required to submit a full plan for our campsite as part of the licensing process. Instead we are developing detailed plans for the layout of the campsite which we will submit to the SAG group for comment and for guidance. Our campsite will be zoned into different areas for motorhomes/campervans and tents. We will include clearly marked access/egress routes and follow statutory guidance for the distance between camping units. The layout also includes mobile toilet units, water standpipes, rubbish bins, etc. No barbecues or open fires will be permitted on the campsite. This information is published on the festival website and all campsite users will be reminded of this upon arrival. SIA Security staff will be in attendance on the campsite at all times to ensure compliance with the campsite rules.



Will the site have adequate facilities? What about toilets?

There is a Health and Safety Executive document known as *The Purple Guide* that provides guidance on the number of toilet units that should be included within the site plan. We have a contract in place with a professional supplier of mobile toilets (“luxury loos”). The toilet units will be emptied and deep cleaned daily and the supplier will have an on-site presence throughout the festival to provide further on-site cleaning services. We have made a conscious decision to provide higher quality toilet units than the portaloos normally seen at similar events.

What are your plans to manage additional traffic caused by the festival?

Access to the campsite will start at 10.00am on the Thursday morning and we fully expect arrivals to be spread out across the day with very little disruption to local residents. Details on car parking and camping are given below.

During the setup phase, procedures are under discussion between NPT and NVRF to ensure contractors vehicles can gain entry with minimal disruption to regular park users. This will include being escorted through the Park to Horse Meadow. Similar procedures will be in place for when the infrastructure is removed. The contractors and the NVRF site management team have extensive experience in managing the delivery and collection of equipment needed to run the festival.

What plans are in place for parking?

A discounted parking fee has been arranged with Nene Park Trust to encourage non-camping festival attendees to park in the Ferry Meadows car parks and then walk to the site. Those with day tickets will be given a 50% discount off their parking on each day they attend. The festival website will clearly state this and all day visitors will be strongly encouraged to use the Nene Park parking facilities. For those who come from beyond Peterborough and are therefore less familiar with the area, we are confident they will follow our guidance on where to park rather than parking in local residential areas.

A large number of day visitors are not anticipated and will amount to only a fraction of the normal numbers visiting Nene Park. Peterborough Celebrates had 23,000 visitors; NVRF in comparison is likely to have around 100 day ticket holders and will probably average 2 per vehicle. They will have discounted parking and anyone travelling from outside the area is highly likely to head to the car parking at the venue as advised by organised.

Those camping will be directed to the campsite and will park by their pitches unless extreme weather conditions make this impractical. In such circumstances, regular park attendance is likely to reduce significantly so they will be able to utilise the existing parking spaces within Ferry Meadows in the short term. They will enter and leave via one designated and stewarded route, agreed with NPT.

Bands, key workers and some stewards will park in the backstage area of the Music Arena. Traders will park by their pitches and are only permitted to arrive and depart whilst the Music Arena is closed.



How will you make sure the park is respected and not left in a mess afterwards?

We operate a 'leave-as-you-find-it' policy at the festival and will make sure that everything is cleared away and there will be no mess left at the end.

Rubbish bags will be provided to campers on arrival together with instructions and appropriate signage. These instructions will also be posted on the festival website. The campsite will routinely be checked by a litter team throughout the festival. NPT has strict rules prohibiting the use of glass and these will be closely adhered to during the festival.

Within the arena, the bar and marquees, rubbish bins will be provided and the litter picking team will be checking the site regularly. At the end of each evening, the marquees will be checked and any litter removed as part of the close down procedure.

What impact will there be on the wildlife habitats across the site?

Nene Park Trust take the protection of their wildlife very seriously, and would not have agreed to host the event if it posed any risk to the wildlife habitats on-site. Horse Meadow has been chosen as the site of NVRF for this very reason, and NPT will continue to monitor the festival site right up to the dates of the event to ensure minimal impact.

Why is the license application broader than just this event?

The advice we were given by Peterborough City Council was to keep the application as general as possible. This allows for some flexibility if we were to run the festival again in future years, for example if we were to run the festival over a different weekend or change any details in the future. However it's important to stress that for 2023, the licence only enables us (NVRF Ltd) to run the festival as publicised, on the days and times specified.

If a licence is granted, it means that no other organisation, including Nene Park Trust itself, could organise any future festival utilising the NVRF licence. This is the only festival that we are planning for 2023. The time and effort required to organise a festival of this nature is substantial and as a team of unpaid volunteers, there is no possibility that we would wish to organise more than one a year.

Will Nene Park Trust be planning to hold regular music festivals on the same site?

The Trust have no plans to hold regular music festivals on this site. Instead, it is exploring how a creative and artistic events programme across the breadth of its green spaces might support increased community engagement and exciting partnerships in the long term.

Does this change the nature of Ferry Meadows in any way?

When Nene Park Trust was established in 1988, the charity took over the stewardship of Ferry Meadows from the Peterborough Development Corporation, whose General Manager Wyndham Thomas emphasised that it should be a place for refreshment and a place for fun. With this in mind, one of the charitable objectives of the Trust is to provide facilities for recreation and leisure, with a diverse offer available to cater for more people and different tastes.

Working with NVRF to enable them to use the facilities at Ferry Meadows to put on this festival for their audience is yet another example of this. The Trust is developing its Events Programme through



a mix of Trust-led events and partnerships with organisations like NVRF who hire the space. The Trust believes this will engage visitors in positive recreation activities, whilst also celebrating the unique connection to nature.

Who can I contact during the festival if I want to raise a concern?

There will be a contact number for local residents to raise any issues. This will be published in advance on the festival website and will also be displayed within Nene Park itself, as well as being readily available on the Nene Park website and social media channels



This page is intentionally left blank

23064-L01-SW

Trevor Cotterell
Nene Valley Rock Festival

21/06/2023

Dear Trevor,

NENE VALLEY ROCK FESTIVAL – PREDICTED NOISE IMPACT

Further to our recent conversations, I am writing to present the results of the noise modelling exercise carried out for the Nene Valley Rock Festival (NVRF).

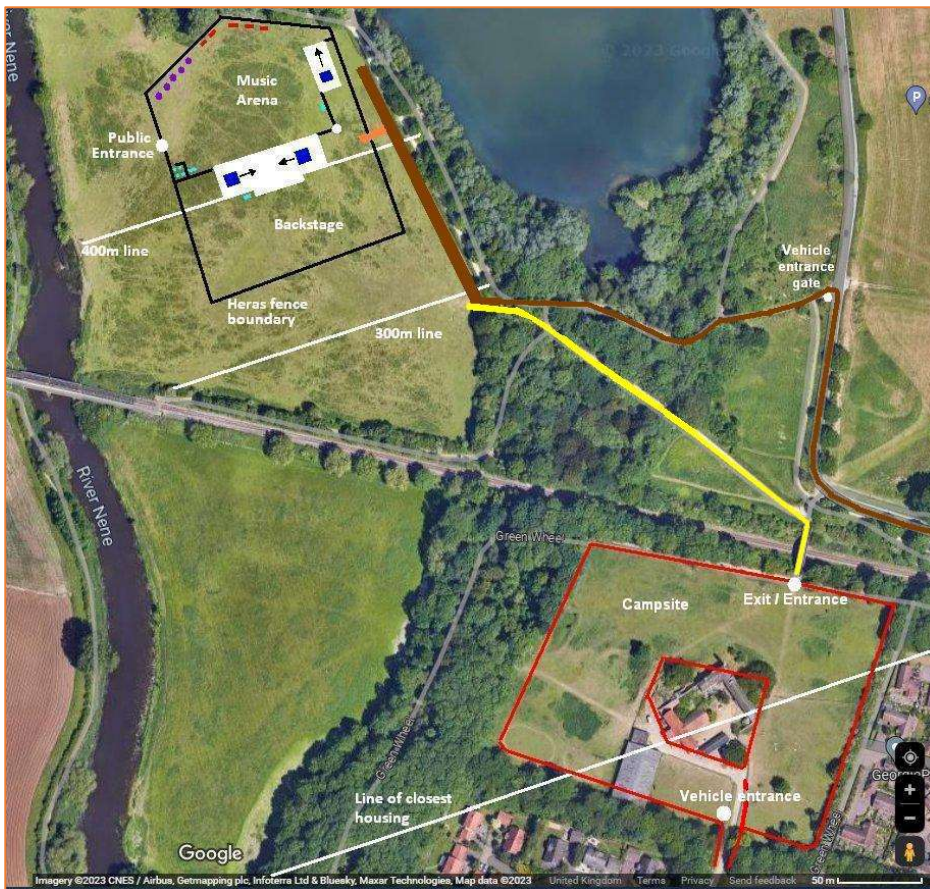
Noise Emission Limits

We understand that the Local Authority requires that noise emissions from the Festival when measured at the nearest noise sensitive receptors (housing on Wistow Way, at a distance of approximately 375m) should be no higher than 58dBL_{Aeq,15min}.

Festival Proposals

The Festival will have two marquee venues. The site layout is indicated in Figure 1, below.

Figure 1: Indicative Site Layout



The larger venue to the south of the Arena is the Swan-Heron Stage. This has a stage at either end, for alternating operation. Loudspeakers are oriented to be approximately parallel to the housing,

To the north of the Arena is a second stage, with loudspeakers oriented away from the housing.

The preferred front of house level at the mixing position is no more than $90\text{dB}_{\text{Aeq},15\text{min}}$ given the nature of the acts and the relatively small scale of the festival (1000 patrons). The PA supplier, Blue Shed, intend to design the sound systems such that music is directed towards the crowd area, with directional loudspeakers used to minimise sound spillage to the rest of the site.

Noise Model

A noise model of the site and surrounding area has been prepared using the Soundplan 9.0 software package. This takes into account the topography of the area, distance and ground conditions.

The model has been populated with point sources to represent loudspeakers at either side of each stage at a height of 5m, representing the worst case. The loudspeakers have been assigned a 3D directivity based on a typical PA with a $90^\circ \times 60^\circ$ dispersion pattern.

The model has been calibrated to a noise level of $90\text{dB}_{\text{Aeq},T}$ at the mixing desk position, which equates to a sound power level of $125\text{dB}_{\text{LWA}}$ for each loudspeaker position.

No allowance has been made for any sound attenuation provided by the marquees themselves. The predictions therefore represent a worst-case for noise impact from the Festival.

Predicted Noise Levels

With a level of $90\text{dB}_{\text{Aeq},15\text{min}}$ at the mixing desk, and assuming simultaneous operation of the two marquee venues, the predicted noise level at the nearest residential receptors is $50\text{dB}_{\text{L}_{\text{Aeq},T}}$ for the Heron Stage, and $48\text{dB}_{\text{L}_{\text{Aeq},T}}$ for the Swan Stage. The noise map for the Heron Stage condition is presented in Figure 2, below.

The model results therefore suggest that the requirements of the Local Authority with regard to noise emissions can be achieved with a front of house noise level of up to $98\text{dB}_{\text{L}_{\text{Aeq},T}}$.

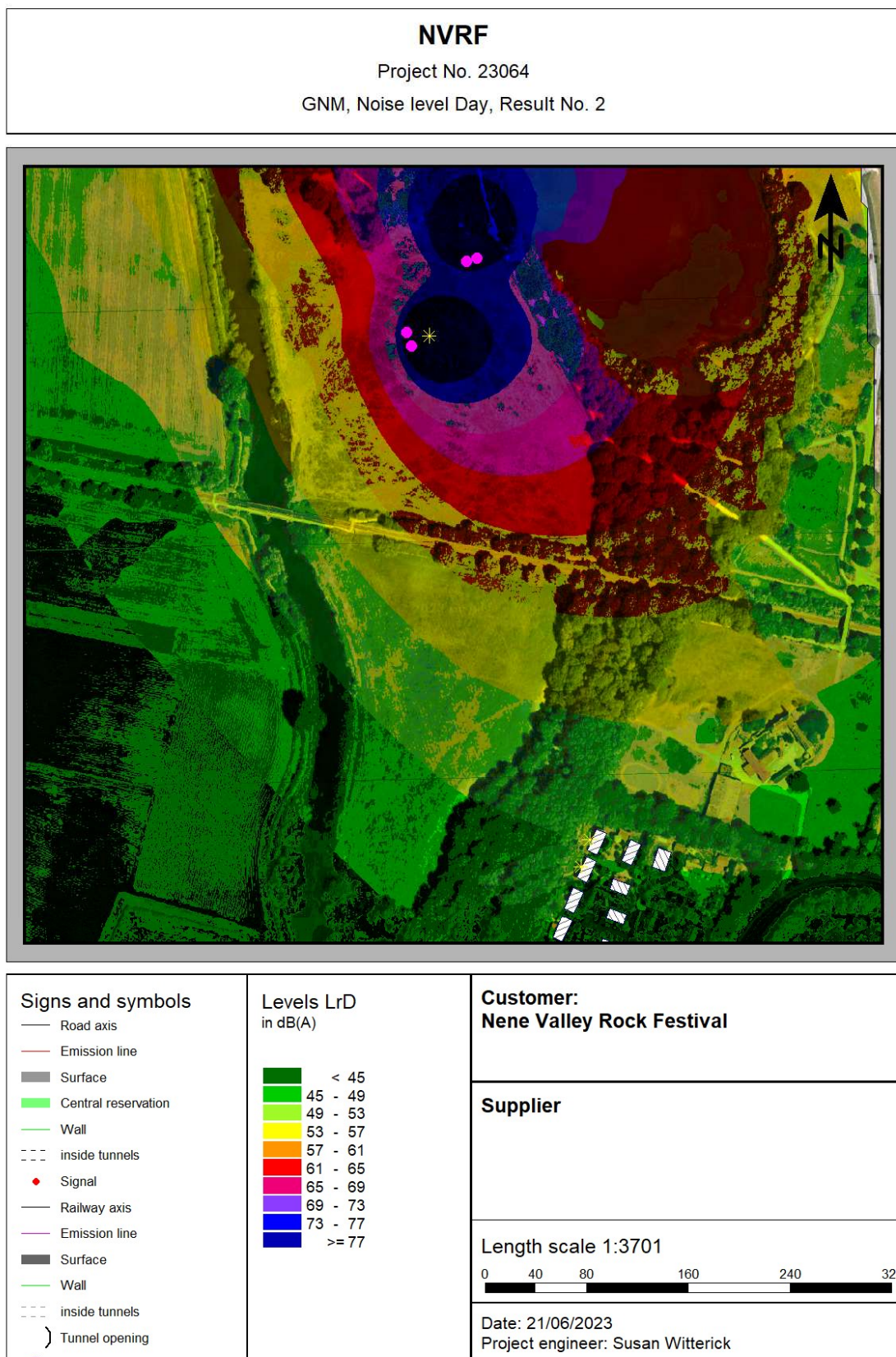
Yours Sincerely,

A handwritten signature in black ink, appearing to read 'S Witterick', written over a faint circular stamp.

Susan Witterick

Director, dBx Acoustics Ltd

Figure 2: Noise Map, Heron Stage and Second Stage



SoundPLANnoise 9.0 C:\Users\Susan\Bx Acoustics Dropbox\Projects\23064 - Nene Valley Rock Festival\calcs\ModelSheet2.sgs - last edit 21/06/2023

This page is intentionally left blank



HI, TREVOR

Thank you for considering our services.

Within this document you'll find the quote you requested as well as our detailed scope of work, so that you can be sure we have understood your requirements.

We aren't a faceless corporation, so you'll also find some information about dBx Acoustics Ltd, to give you a flavour of who you'll be working with.

If you have any questions, please feel free to contact me. If you're happy to proceed, you can e-sign this proposal. We are looking forward to working with you!

Sincerely,

Susan Witterick

dBx Acoustics Ltd

ABOUT US

dBx Acoustics was founded in 2013 with the aim of providing high quality acoustic design and advice, while remaining practical, approachable, and good to work with.

Our team is based in central Manchester, and we work on projects nationwide, from Truro to Thurso. All of our consultants hold appropriate qualifications in acoustics and are members of the Institute of Acoustics at the relevant level.

Our capability extends from planning noise impact assessments through facade and ventilation design, sound insulation and room acoustics, to M&E noise control. We have worked on projects as diverse as motion capture studios, co-working spaces, hospitals and schools as well as numerous residential schemes and offices.

WHAT WE'RE ABOUT



PROFESSIONALISM

Our consultants are appropriately qualified and are members of the Institute of Acoustics. You can be sure that we have the expertise and experience to tackle whatever you throw at us.



QUALITY

We take our responsibilities towards our clients seriously. That's why we are quality certified to BS EN ISO 9001:2015 and are accredited via UKAS (laboratory number 9473) to carry out sound insulation testing. We also hold BS EN ISO 14001:2015 environmental management certification.



RESULTS

We'll always do our best to help you without using too much confusing jargon. We'll explain the results of our work to you clearly, and make sure you have the information you need.

SCOPE OF WORK

Please note: The number of people and hours required are based on previous event requirements. This may need to be amended dependent on any Local Authority stipulations, and the degree of control and monitoring needed to satisfy the imposed noise criteria. If so, our fee will be amended accordingly.

EVENT PREPARATION

- Appraise site layout, orientation of systems, and structures, and provide comment and advice as necessary.
- Review of licence conditions relating to noise, or other relevant noise conditions applying to the event.
- Prepare the Noise Management Plan (NMP) for submission to the Local Authority.
- Liaise with the Local Authority to agree noise monitoring positions, routines for monitoring, arrangements for contact during the event etc.

DURING EVENT

- Attend site from Thursday 31st August to assist with any sound level setup, dependent on licence requirements.
- Provide a 1-person noise management team experienced in assessing noise complaints, conducting noise measurements, and determining nuisance, for the 4 event days. This will allow us to measure on- and off- site simultaneously and liaise with the Local Authority.
- Monitor sound levels both on- and off-site and advise the event organisers of any modifications to levels on site necessary to comply with licence conditions, or otherwise avoid circumstances which would constitute a noise nuisance and therefore lead to complaint, as described in the NMP.

- Receive and investigate any noise complaints, either directly or via the Local Authority. NVRF to provide infrastructure to receive and log complaints on site.

EQUIPMENT

- Two sets of noise monitoring equipment with frequency analysis capability will be provided, for measuring noise levels both on- and off-site.
- Additional monitors will be installed at the mixing position of the three stages.

POST-EVENT

- Liaise with the Local Authority and event organisers as required.
- Provide a summary report detailing the noise monitoring undertaken and any actions take on site during the event to control noise levels or respond to complaints received.

Nene Valley Rock Festival

Please see below three photographs taken of the campsite **after** the Cambridge Rock Festival at Peterborough Showground last year (approximately 10am on Monday morning), prior to any litter picking activity that morning.

Whilst we accept that was a different event, most of the NVRF core team were heavily involved in the running of that event and we anticipate a similar demographic; indeed from existing ticket sales we know that a significant number of the same people will be coming to NVRF this year.

Consequently we would anticipate a similar outcome and of course litter picking would take place on Monday in any case as the need arises.







This page is intentionally left blank